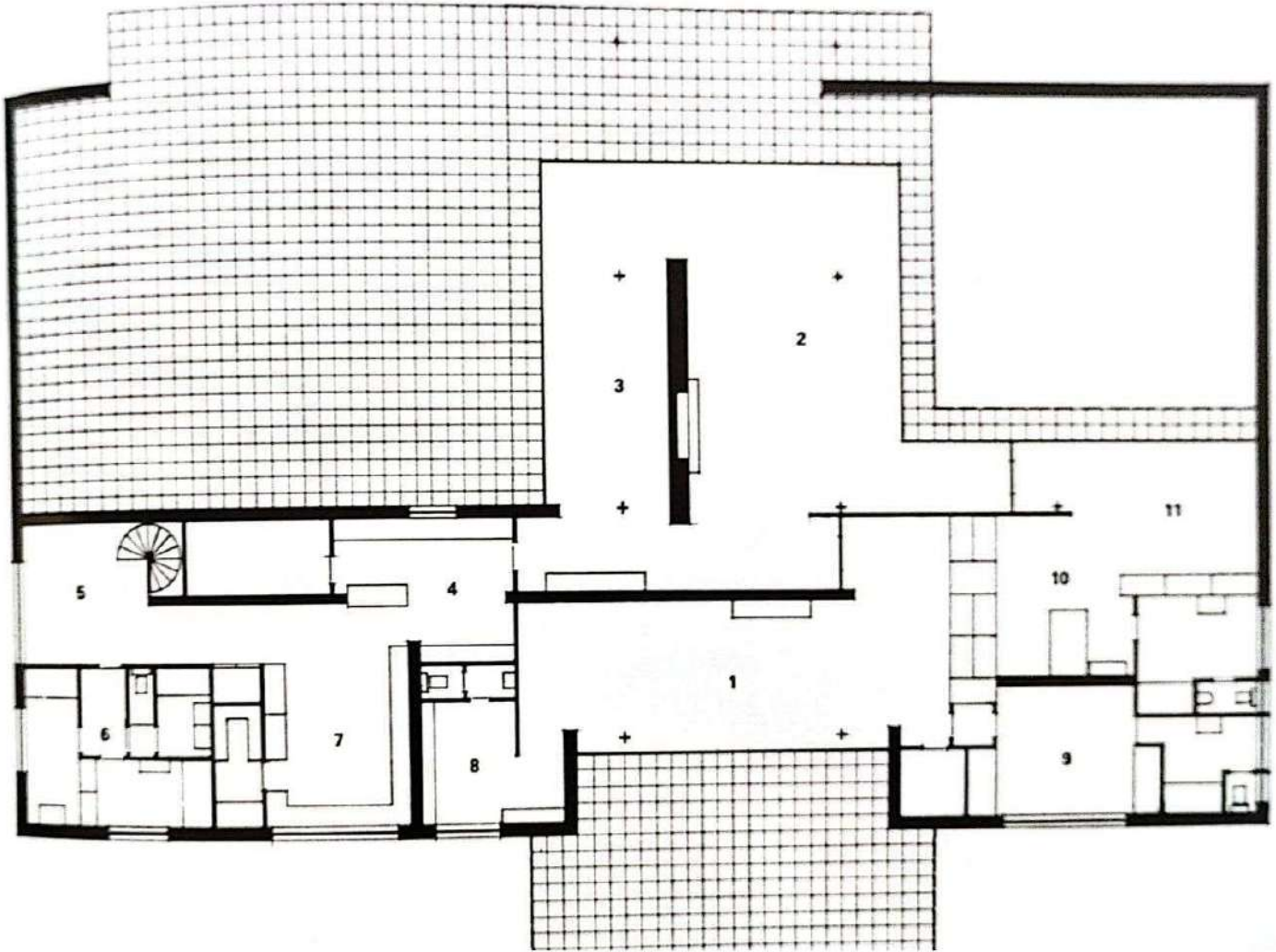
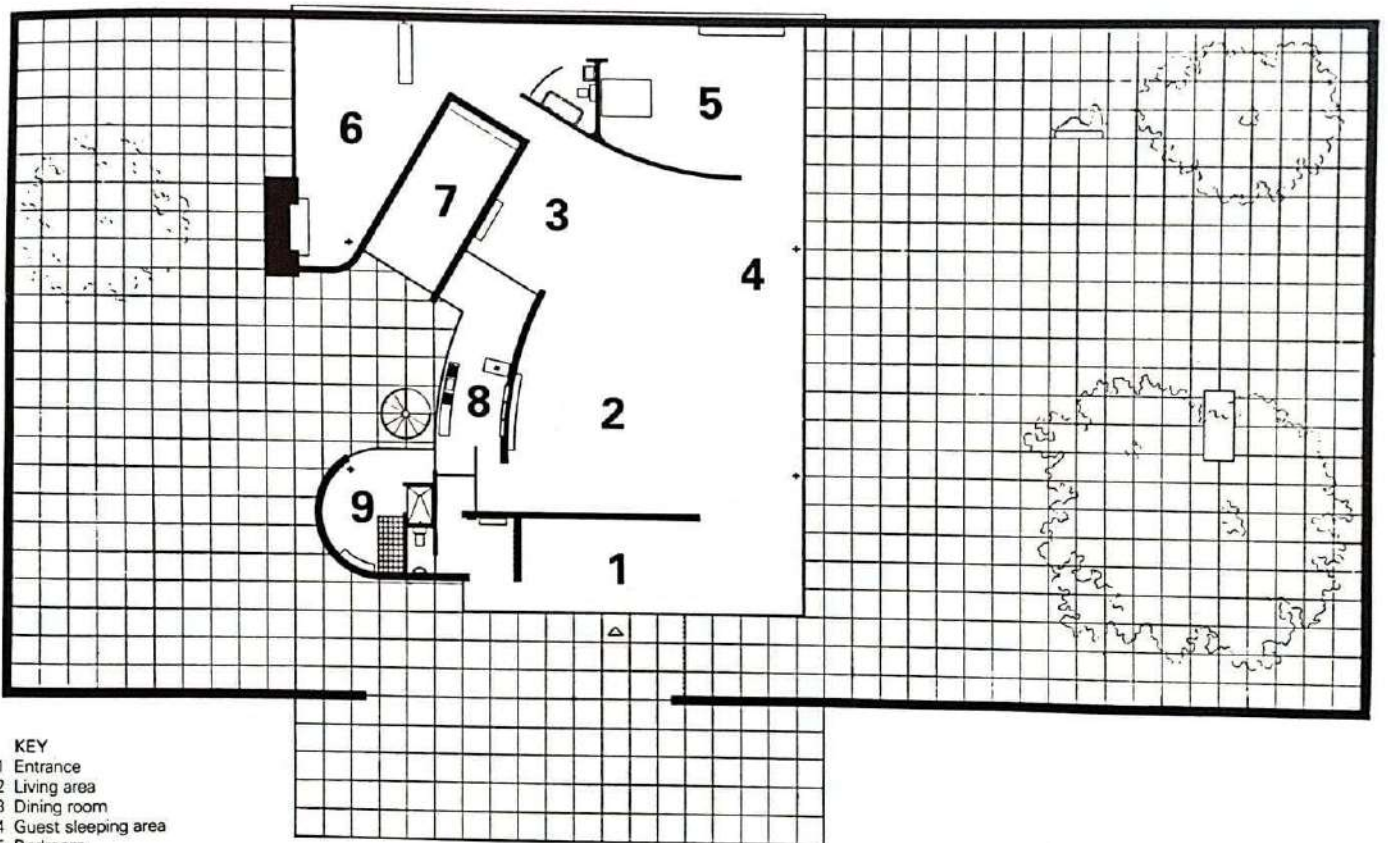


KEY
Entrance
Living area
Dining area
Servants
Personnel

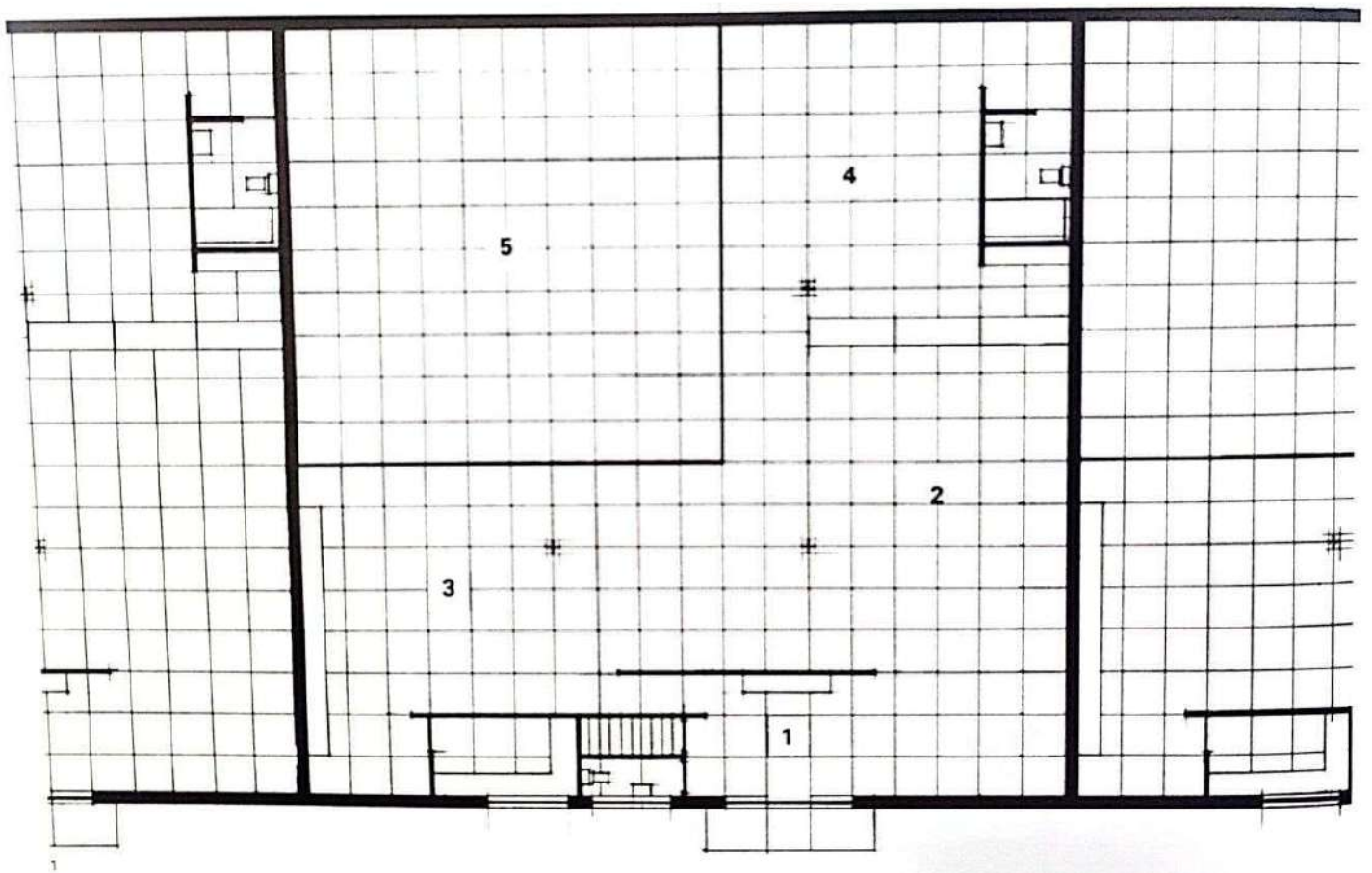
- 6 Servants quarters
- 7 Kitchen
- 8 Garderobe
- 9 Guest bedroom suite
- 10 Main bedroom suite
- 11 Study



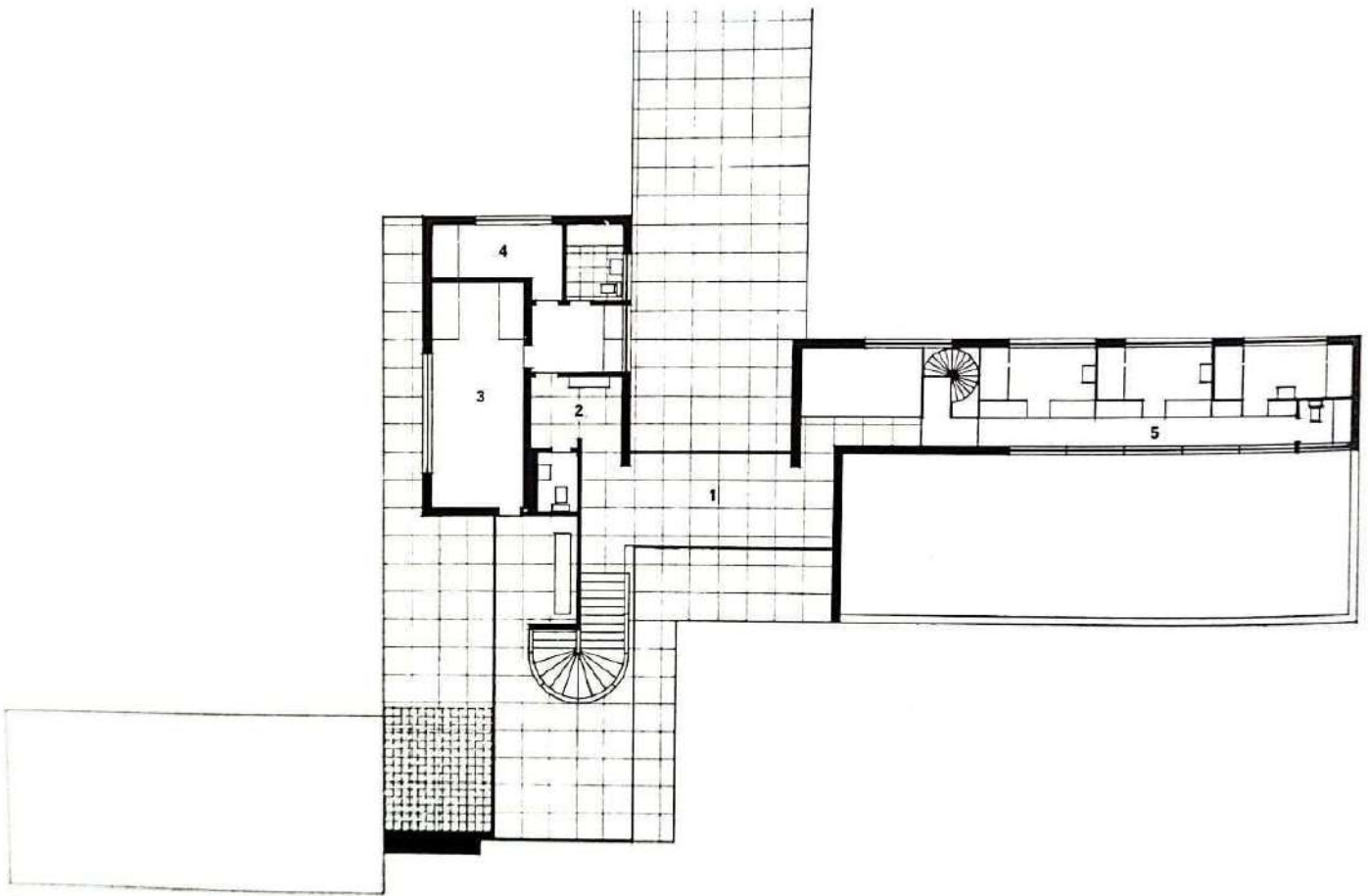


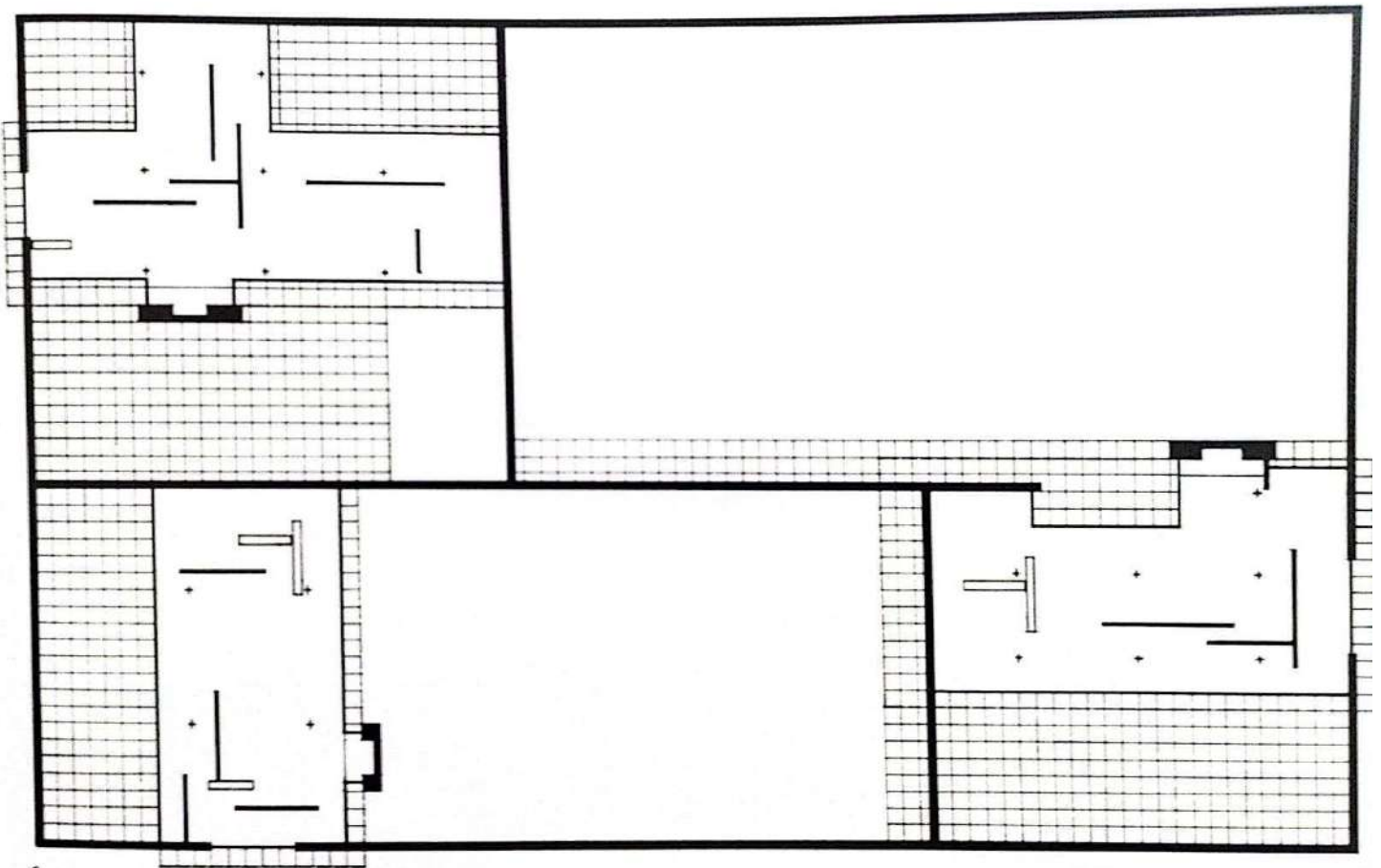
- KEY**
- 1 Entrance
 - 2 Living area
 - 3 Dining room
 - 4 Guest sleeping area
 - 5 Bedroom
 - 6 Study
 - 7 Garage
 - 8 Kitchen
 - 9 Maid's room

- KEY**
- 1 Lobby
 - 2 Living area
 - 3 Dining area
 - 4 Bedroom
 - 5 Courtyard



- KEY**
- 1 Entrance
 - 2 Garderobe
 - 3 Children's room
 - 4 Maid's room
 - 5 Servants' wing





3

Ulrich Lange House (1935)

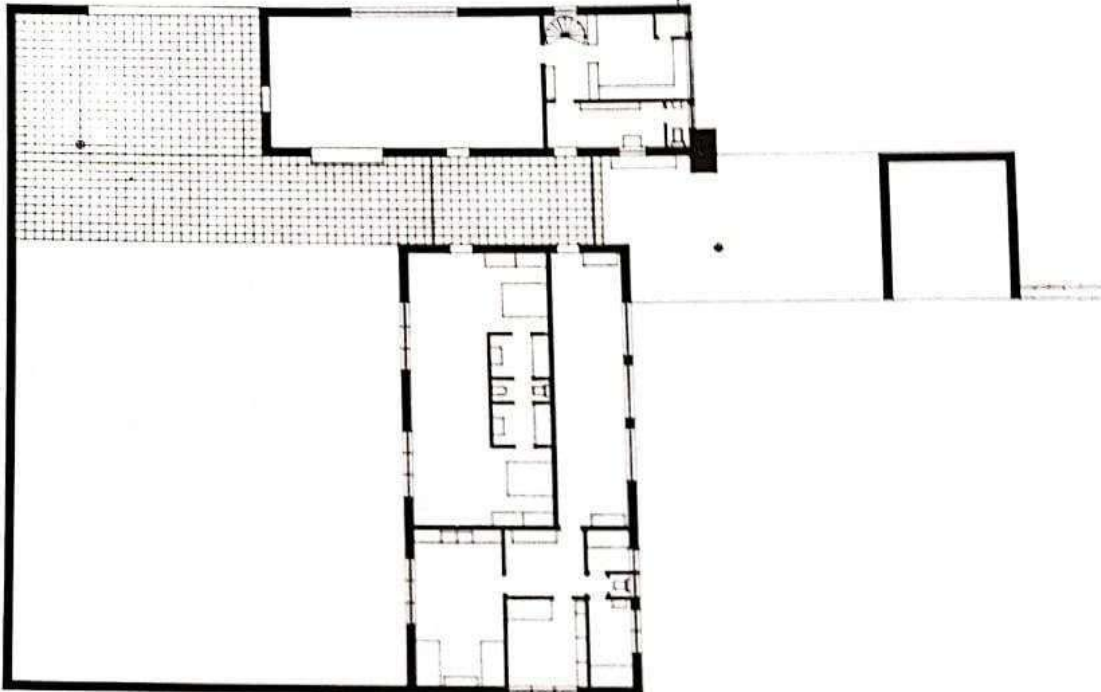
The Lange family of Krefeld were very kind to Mies during the Nazi years. The textile industrialist's son, Ulrich, commissioned Mies to design his house, and two schemes were proposed. The first project was still inspired by the Concrete Country House – the division into separate wings; while the second project came closer to the classic Miesian court-house – the confinement within a single rectangle.

Neither scheme was built because the local authorities refused to issue a permit unless the house was hidden from the street by an earth berm (and modern architecture was 'banned' in 1933). It is interesting to note that in each project there are two beds in the main bedroom and the beds could be screened from one another.

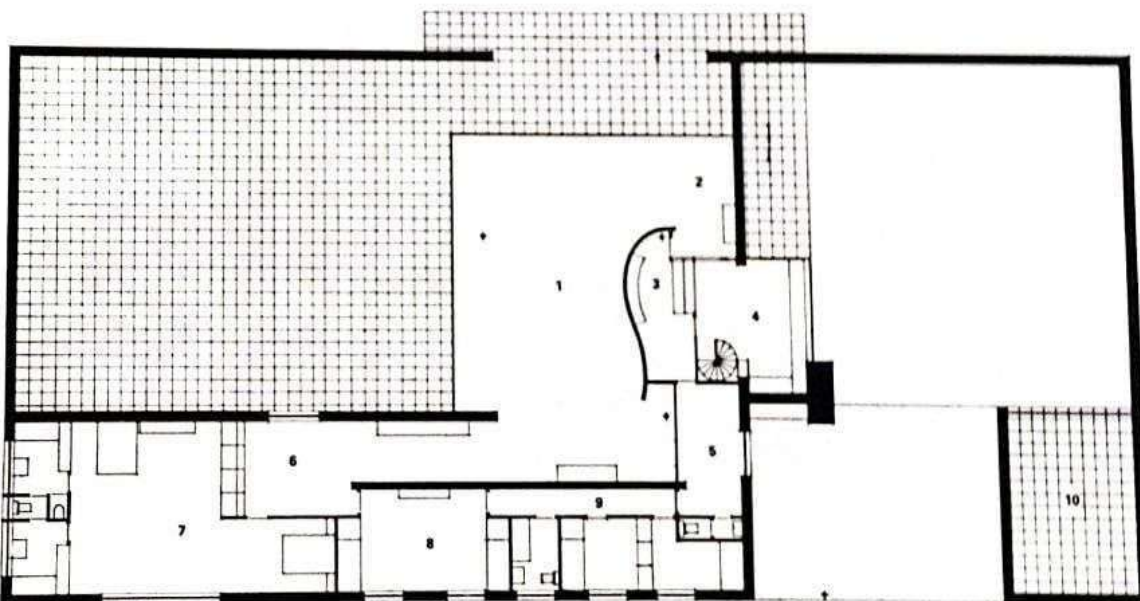


1

- 1 Street elevation
- 2 First scheme plan
- 3 Second scheme plan



2



3

- KEY**
- 1 Living area
 - 2 Dining area
 - 3 Servery
 - 4 Kitchen
 - 5 Entrance
 - 6 Study
 - 7 Main bedroom suite
 - 8 Children's room
 - 9 Servants' quarters
 - 10 Garage