

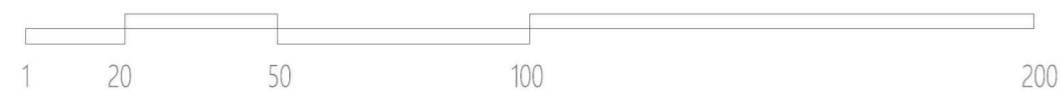
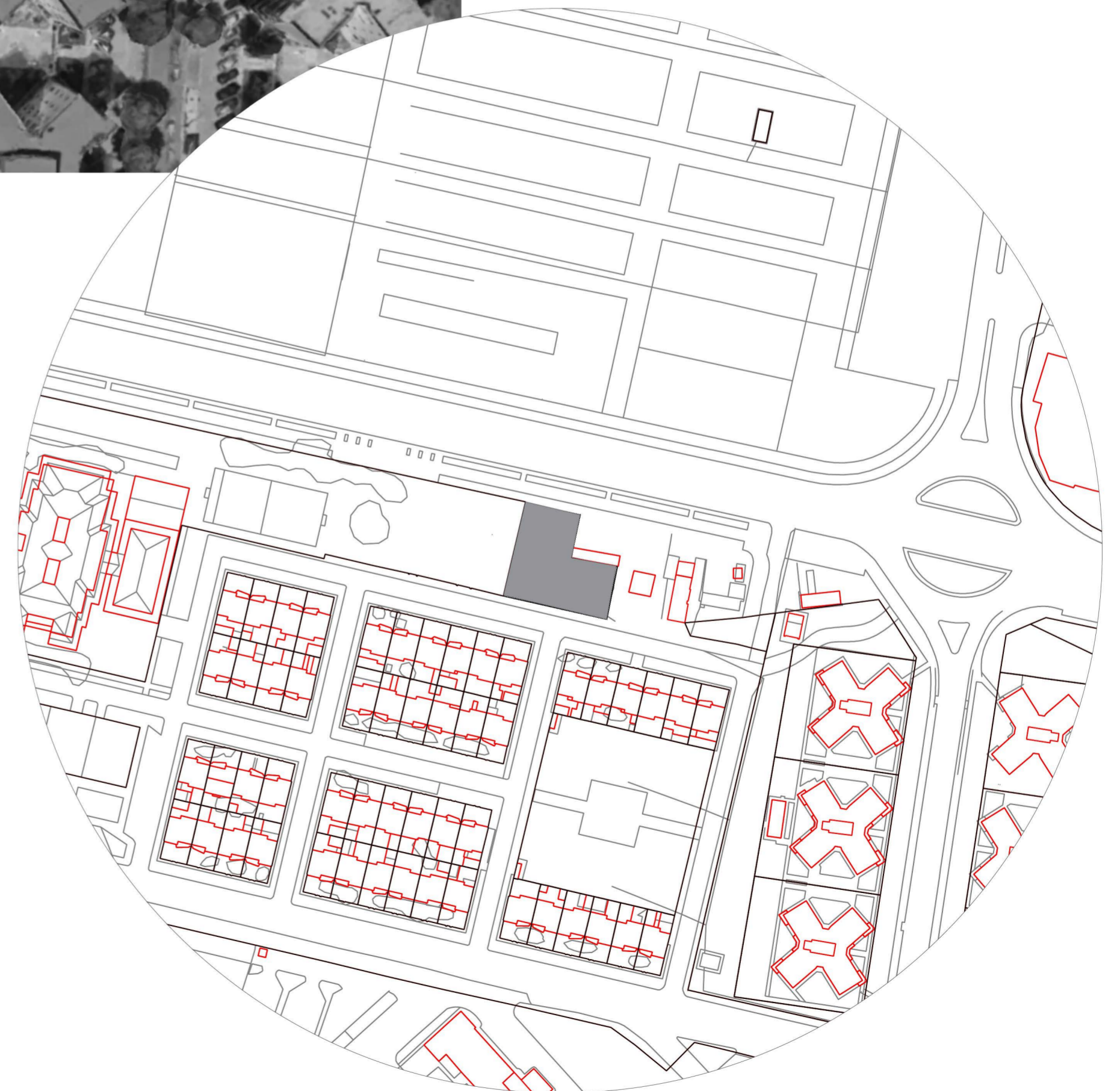
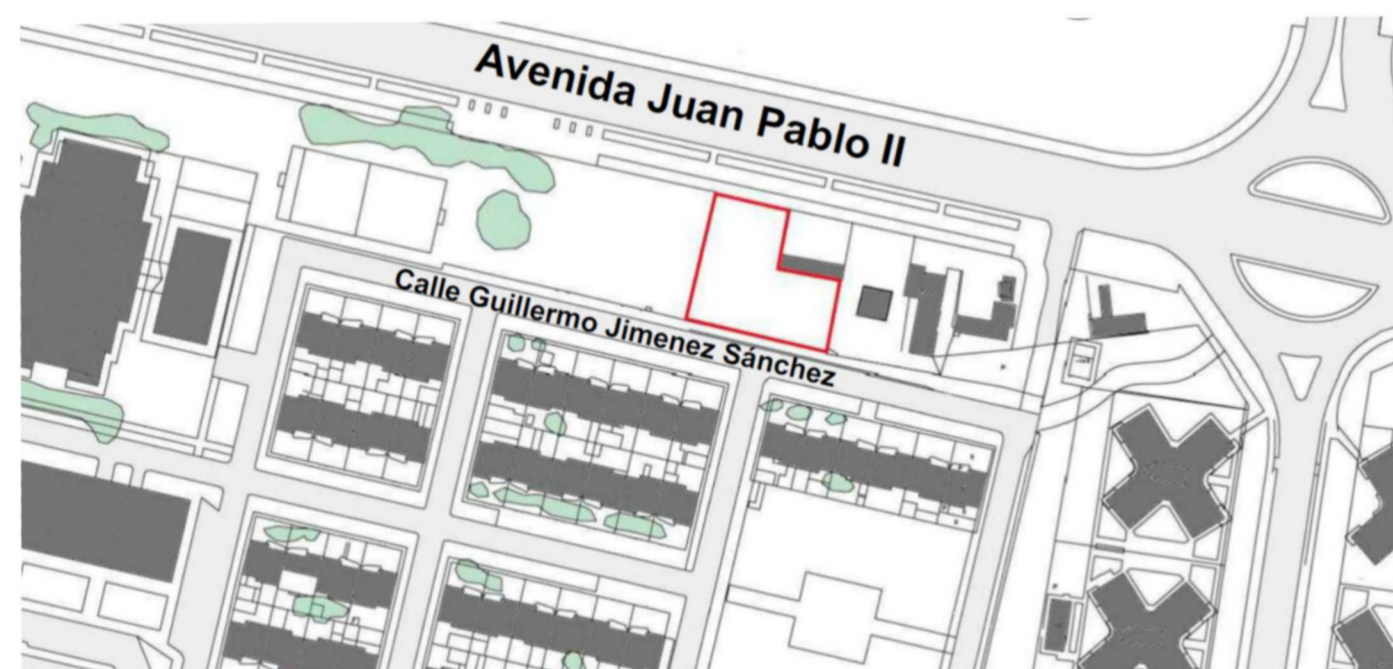
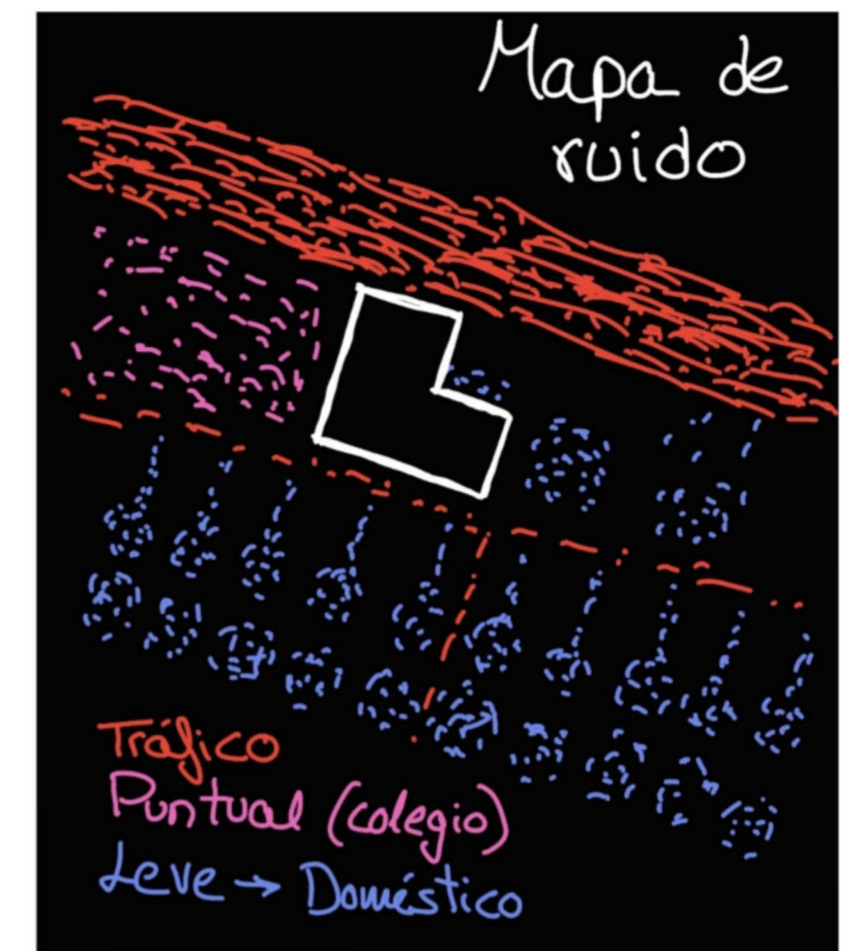
# PROYECTOS III, Ejercicio 1, Casa introspectiva

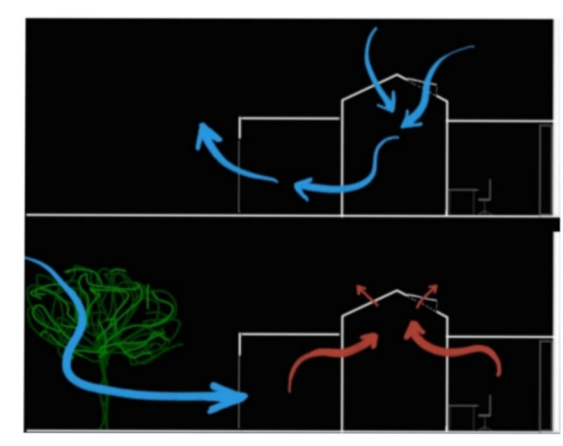
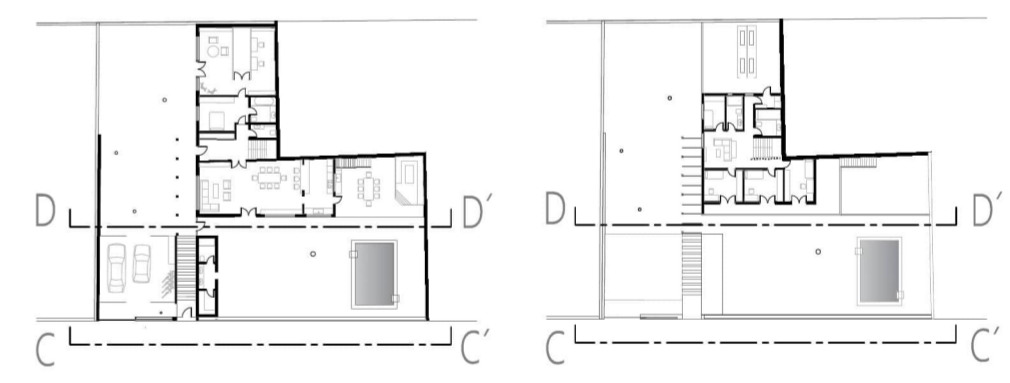
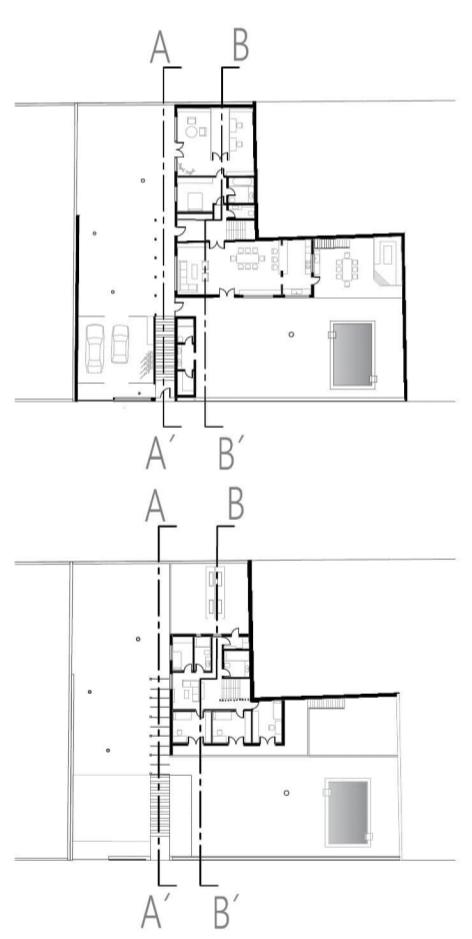
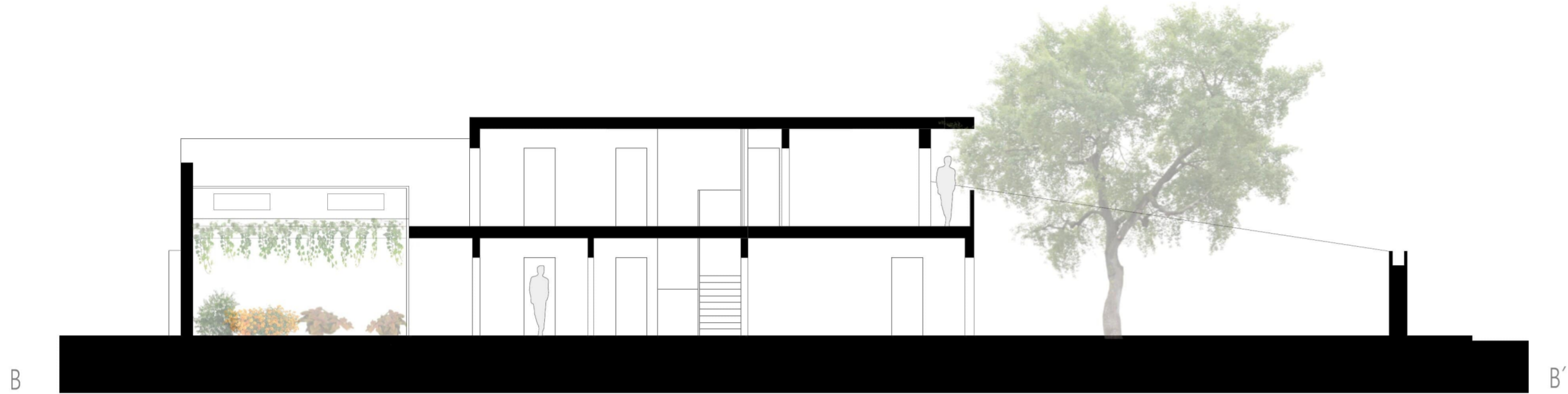
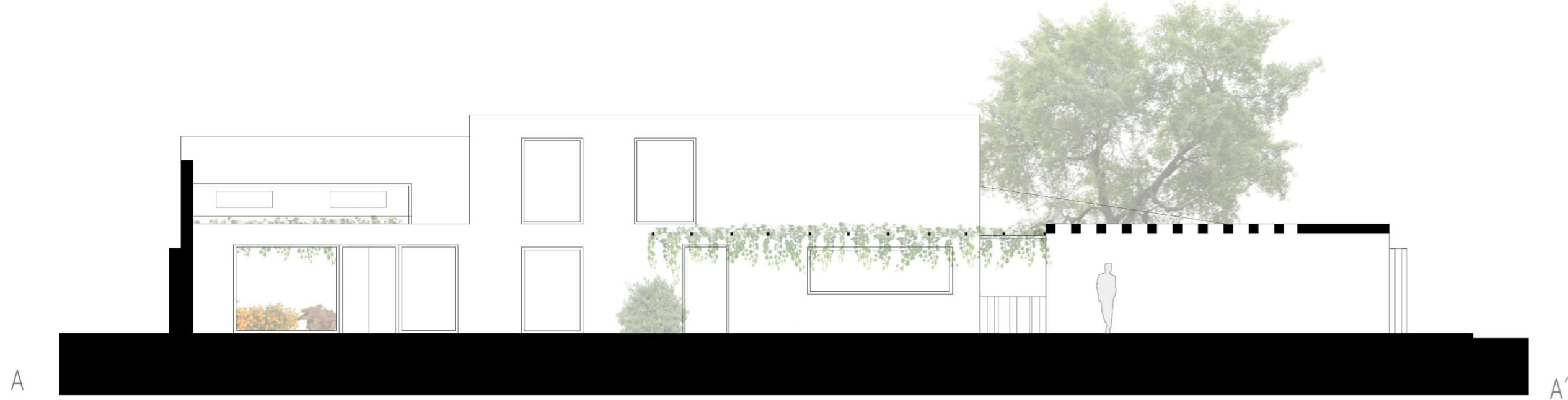


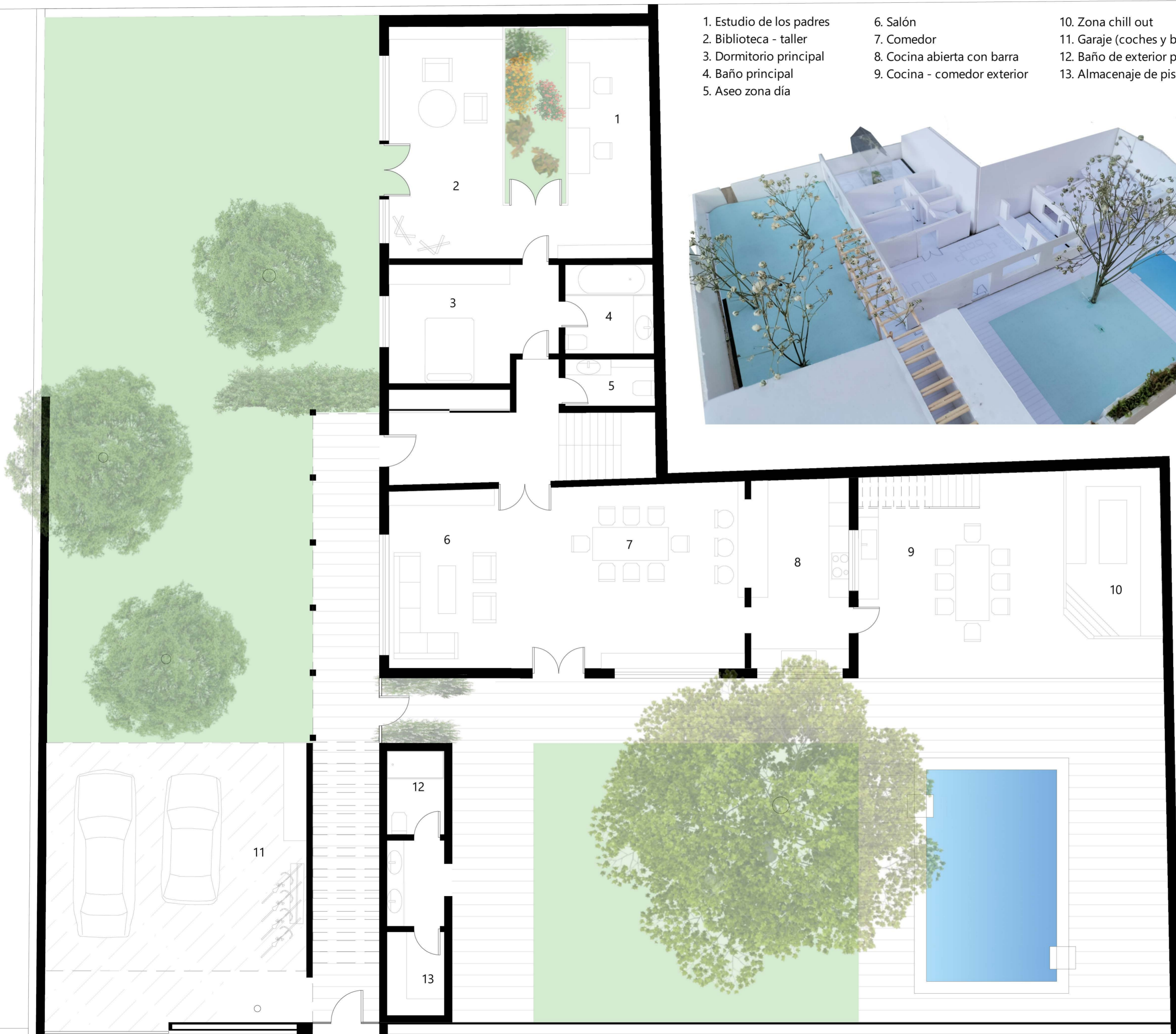
Elia Trianes

Grupo: 2.04

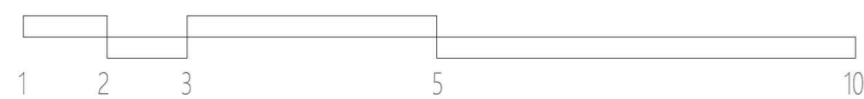
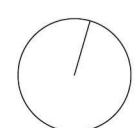
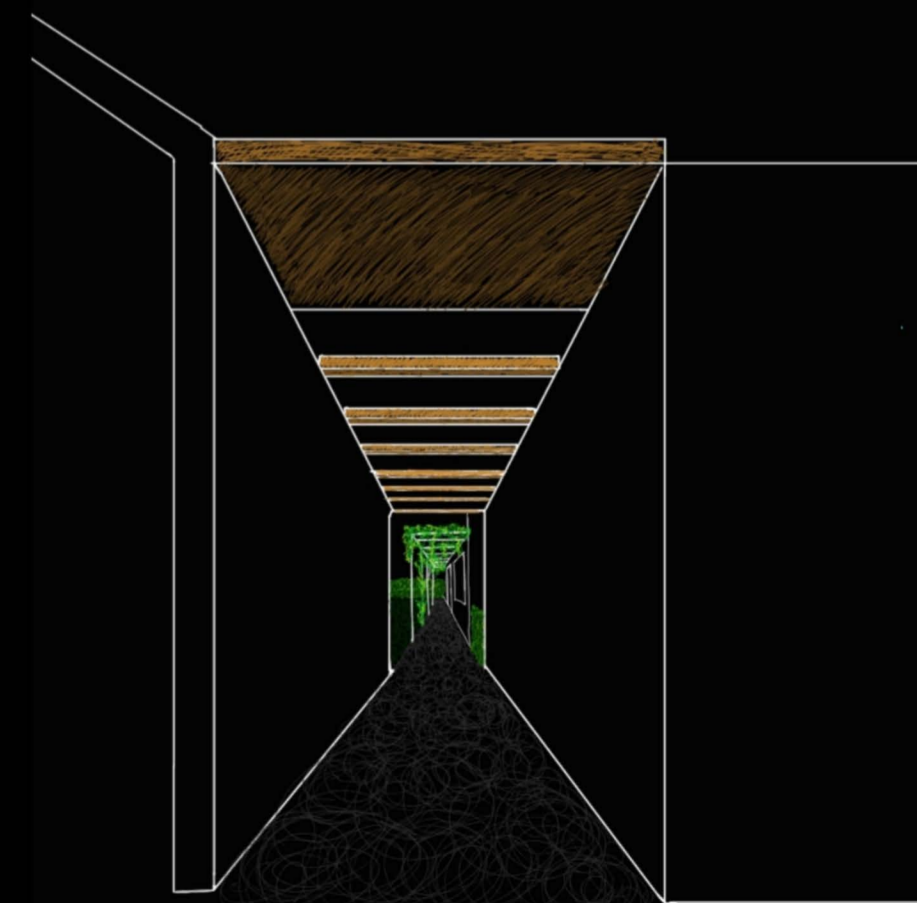
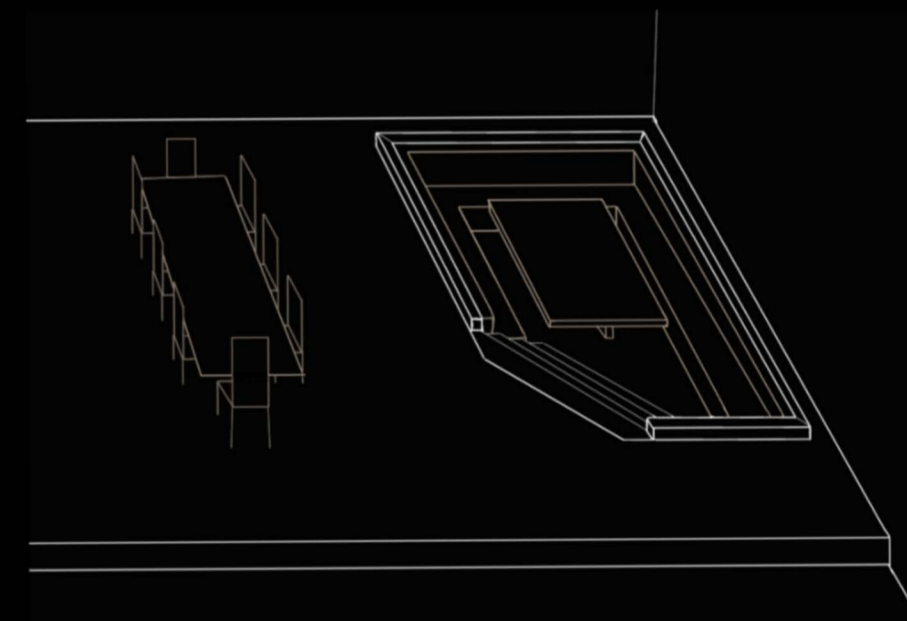
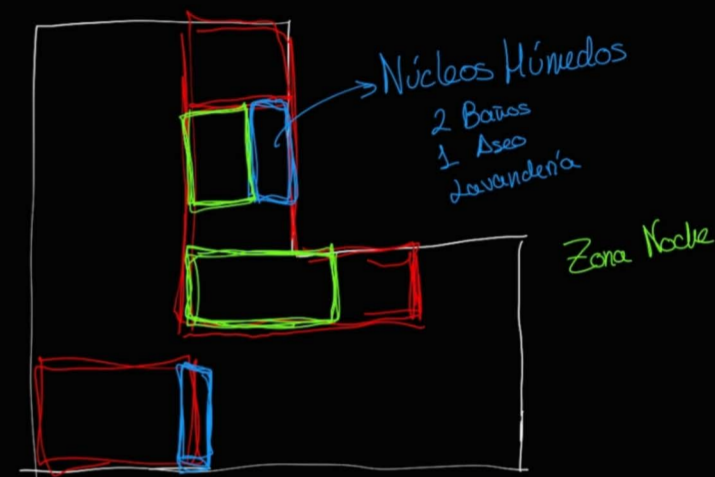
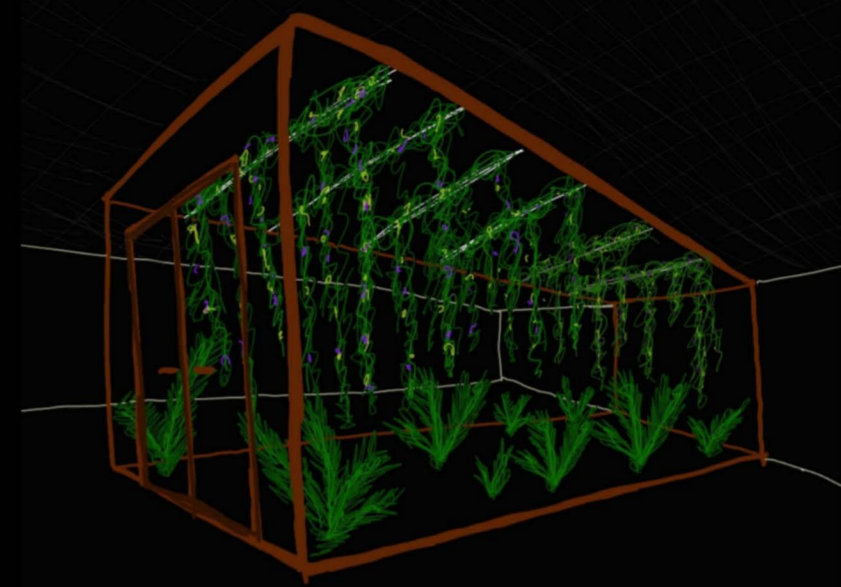
Curso: 2022-2023







- 1. Estudio de los padres
- 2. Biblioteca - taller
- 3. Dormitorio principal
- 4. Baño principal
- 5. Aseo zona día
- 6. Salón
- 7. Comedor
- 8. Cocina abierta con barra
- 9. Cocina - comedor exterior
- 10. Zona chill out
- 11. Garaje (coches y bicis)
- 12. Baño de exterior para piscina
- 13. Almacenaje de piscina y jardín



- 1. Dormitorios de los hijos
- 2. Estar
- 3. Dormitorio de invitados
- 4. Baño secundario-invitado
- 5. Baño principal de planta
- 6. Lavandería
- 7. Exterior no transitado salvo secado de ropa y mantenimiento de las placas solares

